

Ball Valves and Spare Parts

Type 15C01 - Ball Valve full bore



Cryogenic Ball Valve, PN50

Unidirectional ball valve to be installed in flow direction with upstream pressure relief hole.
 Socket weld connection for stainless steel pipes acc. to ISO 1127
 Butt weld connection for stainless steel pipes acc. to ISO 1127
 Female thread type NPT acc. to ANSI 1.20.1
 Female thread type G (BSPP) acc. to ISO 228/1
 Marking acc. to EN 1626
 "cleaned and degreased for oxygen service"

Available accessories:

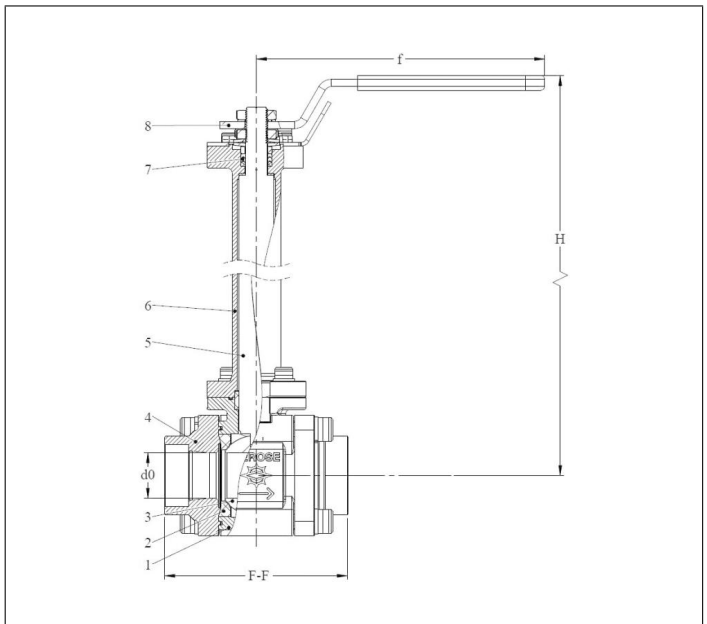
- Lock for locking device type 55394.0019.0302



Applications:

Approved for air gases, vapours and cryogenic liquefied gases.
 Working temperature: -196°C / -321°F (77K) up to +65°C / +149°F (338K)

Materials	DIN EN	ASTM
1 Body	1.4409	A 351 CF3M
2 Side connection	1.4409	A 351 CF3M
3 Ball seal	PCTFE	
4 Ball	1.4404	A 479 Grade 316
5 Stem	1.4404	A 479 Grade 316
6 Bonnet extension	1.4409	A 351 CF3M
7 Gland packing	Teflon / Glass filled (25%)	
8 Lever	1.4301	A 240 Grade 304



Standard marking acc. to Pressure Equipment Directive 2014/68/EU (PED).



Technical data - Standard design

Nominal size [DN]	Height (H) [mm]	Orifice [D ₀]	Weight [kg]	Kvs-value [m ³ /h]	Cv-value [gal/min]
15	291	14.5	1.3	10.7	12.5
25	304	25.0	3.3	32.1	37.6
50	400	50.0	12.0	193.8	226.8

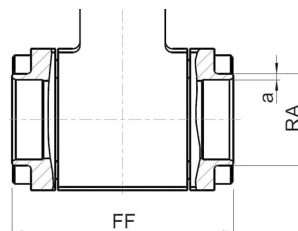
Dimensions in mm.

Ball Valves and Spare Parts

Type 15C01 - Ball Valve full bore



Connection types

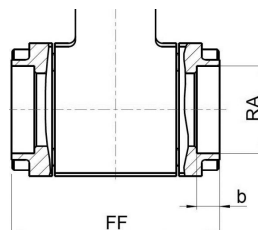


Butt weld connection acc. to
· ISO 1127

DN	Face-to-face dim. (FF) [mm]	Outside pipe-Ø ISO (RA) [mm]	Wall thickness pipe ISO (a) [mm]	Part No.
15	70	21.3	2.0	15C01.A001.000002
25	100	33.7	2.0	15C01.A001.000006
50	150	60.3	2.9	15C01.A001.000010

Butt weld connection acc. to
· ASTM A312

DN	Face-to-face dim. (FF) [mm]	Outside pipe-Ø ASTM (RA) [mm]	Wall thickness pipe ASTM (a) [mm]	Part No.
15	70	21.34	2.11	15C01.A001.000013
15	70	21.34	2.77	15C01.A001.000014
25	100	33.40	2.77	15C01.A001.000015
25	100	33.40	3.38	15C01.A001.000016
50	150	60.33	2.77	15C01.A001.000017
50	150	60.33	3.91	15C01.A001.000018



Socket weld connection acc. to
· ISO 1127
· ASTM A312

DN	Face-to-face dim. (FF) [mm]	Socket depth (b) [mm]	Socket diameter (B) [mm]	Part No.
15	70	10.0	21.3	15C01.A001.000001
25	100	13.0	33.7	15C01.A001.000005
50	150	16.0	60.3	15C01.A001.000009

Female thread type

· NPT acc. to ANSI 1.20.1
· G (BSPP) acc. to ISO 228/1

DN	Face-to-face dim. (FF) [mm]	Thread size (GW) [mm]	Part No.
15	70	G 1/2	15C01.A001.000003
25	100	G 1	15C01.A001.000007
50	150	G 2	15C01.A001.000011
15	70	NPT 1/2	15C01.A001.000004
25	100	NPT 1	15C01.A001.000008
50	150	NPT 2	15C01.A001.000012